



MILWAUKEE VOLLEYBALL GAME NOTES

10 NCAA TOURNAMENTS | 14 CONFERENCE CHAMPIONSHIPS | 12 ALL-AMERICANS

MKEPanthers.com || @MKE_Volleyball || Contact: Sean Engel || Email: engelsf@uwm.edu || Office/Cell: 414-435-8118

2023 SCHEDULE / RESULTS

Date	Opponent	TV	Time
August			
25	at Western Michigan		L, 1-3
26	vs. Northern Iowa		L, 0-3
26	vs. Villanova		L, 2-3
September			
1	vs. California Baptist		L, 1-3
1	vs. Montana State		W, 3-1
2	at St. Thomas (Minn.)		W, 3-0
4	NORTHWESTERN	ESPN+	W, 3-1
8	vs. Idaho		W, 3-0
8	vs. Western Illinois		W, 3-2
9	at SIUE	ESPN+	L, 1-3
12	DEPAUL	ESPN+	W, 3-0
14	MARQUETTE	ESPN+	L, 1-3
15	AIR FORCE	ESPN+	W, 3-2
19	at Chicago State	YouTube	W, 3-2
22	IUPUI *	ESPN+	W, 3-0
23	PURDUE FORT WAYNE *	ESPN+	W, 3-0
29	at Robert Morris *	ESPN+	W, 3-1
30	at Youngstown State *	ESPN+	W, 3-1
October			
3	GREEN BAY *	ESPN+	L, 1-3
6	NORTHERN KENTUCKY *	ESPN+	W, 3-1
7	WRIGHT STATE *	ESPN+	W, 3-1
13	at Oakland *	ESPN+	W, 3-0
14	at Cleveland State *		L, 0-3
20	at Purdue Fort Wayne *	ESPN+	W, 3-2
21	at IUPUI *		W, 3-1
27	YOUNGSTOWN STATE *	ESPN+	W, 3-2
28	ROBERT MORRIS *	ESPN+	W, 3-0
31	at Green Bay *	ESPN+	L, 0-3
November			
3	at Wright State *		L, 1-3
4	at Northern Kentucky *	ESPN+	W, 3-1
10	CLEVELAND STATE *	ESPN+	6:00 pm
11	OAKLAND *	ESPN+	4:00 pm
17	Horizon Quarterfinals		TBA
18	Horizon Semifinals		TBA
19	Horizon Championship		TBA

*Horizon League Game | All times Central
HOME GAMES IN BOLD

ESPN+ is offered at a price of \$9.99/month or \$99.99/year. Fans can sign-up or cancel at anytime.

It is also available as part of a bundle offer that gives subscribers access to Disney+, Hulu, and ESPN+ for \$13.99/month.

MILWAUKEE vs. CLEVELAND STATE

November 10, 2023 | Klotsche Center | Milwaukee, Wisconsin | 6:00 pm



PANTHERS

20-10, 12-4 Horizon

ESPN+



mkepanthers.com



VIKINGS

14-12, 8-7 Horizon

MATCH 31

MILWAUKEE vs. OAKLAND

November 11, 2023 | Klotsche Center | Milwaukee, Wisconsin | 4:00 pm



PANTHERS

20-10, 12-4 Horizon

ESPN+



mkepanthers.com



GOLDEN GRIZZLIES

16-11, 10-5 Horizon

MATCH 32

QUICK NOTES

» Milwaukee returns home for the final weekend of the regular season on Friday and Saturday, when the Panthers host Cleveland State and Oakland. Milwaukee will look to split the season series with the Vikings, while sweeping the season set from the Golden Grizzlies.

» The Panthers (12-4) are currently in second place in the Horizon League standings, a game back from Wright State at 13-3, and a full game ahead of Green Bay at 11-5. The trio atop the league standings have already clinched berths into the Horizon League Tournament alongside Oakland (10-5) and Northern Kentucky (10-6). The final spot will be occupied by either Cleveland State (8-7) or Purdue Fort Wayne (5-10).

» Milwaukee is looking for its 50th all-time win against the Vikings and are 49-23 in all-time meetings with Cleveland State. Milwaukee owns a 26-7 record at the Klotsche Center against CSU.

» The Panthers are 14-3 in meetings with the Golden Grizzlies dating back to their initial meeting in 2013. Milwaukee is currently riding a seven-match winning streak against Oakland and owns an 8-3 mark in matches played at home.

» As a team, Milwaukee is atop the total team points number in the Horizon League with 1920.5, while Wright State is second at 1778. The Panthers are also the top hitting team in the conference with a .251 attacking percentage, more than 20 percentage points ahead of the Raiders. Milwaukee also leads the league in assists (1,398), kills (1,501), and blocks (264.5).

» This Saturday, Milwaukee will be celebrating Senior Day and recognizing its four seniors in a pre-match ceremony. Those being recognized are Kaley Blake, Mati Jakscht, Ari Miller, and Sarah Schrader. The group has been a part of over 400 combined matches and 1,400 sets played, while helping the team to 86 wins over the past five seasons.

» The Panthers are led by head coach Susie Johnson, who is in her 17th season as head coach and 27th overall with the program. Johnson became the program's all-time head coaching wins leader with her 272nd on September 19; later in the week she earned her 500th career win on the Panther sideline, which includes her time as both a head coach and an assistant coach. She earned her 300th career head coaching win on October 20, which includes her two seasons at Parkside.

HEAD TO HEAD

CATEGORY	MILWAUKEE	CLEVELAND STATE	OAKLAND
Kills (Team/Opp)	1,501/1,471	1,225/1,241	1,346/1,375
Errors (Team/Opp)	521/667	495/584	563/590
Attempts (Team/Opp)	3,910/4,094	3,690/3,811	4,055/4,119
Attacking Percent (Team/Opp)	.251/.196	.198/.172	.193/.191
Assists (Team/Opp)	1,398/1,398	1,101/1,150	1,264/1,286
Assists per Set (Team/Opp)	12.1/12.1	11.0/11.5	11.7/11.9
Service Aces (Team/Opp)	155/186	126/146	130/166
Digs (Team/Opp)	1,661/1,645	1,706/1,715	1,906/1,863
Total Blocks (Team/Opp)	264.5/227.5	238/165	205.5/215

**General Information**

Location	Milwaukee, Wis.
Founded	1885
Enrollment	24,836
Nickname	Panthers
Colors	Black and Gold
Field/Capacity	Klotsche Center/2,500
Affiliation	NCAA Division I
Conference	Horizon League
Chancellor	Mark Mone
Director of Athletics	Amanda Braun
Associate AD/SWA	Kathy Litzau
Ticket Office Phone	414-229-5886

Team History

First Year of Volleyball	1973
All-Time Record	1152-690-9
First Year in Division I	1990
NCAA Division I Record	585-437
NCAA Tournament Appearances	10
Last NCAA Appearance	2013
Last NCAA Opponent	Wisconsin
Result	L, 3-0

2022 Team Information

Overall Record	10-20
Home/Away/Neutral	6-4/3-10/1-6
Horizon Record	9-9
League Finish	5th/10
League Tournament Finish	Loss in Quarterfinals
Starters Returning/Lost	7/0
Letterwinners Returning/Lost	13/0

Coaching Staff

Head Coach	Susie Johnson
	Idaho State '93
Milwaukee Record	284-210
Office Phone	414-229-4483
Associate Head Coach	Lindsey Vanden Berg
	Milwaukee '03
Assistant Coach	Nikki Zimmerman
	Iowa '14
Assistant Coach	Will Hall
	UW-Stout '00
Athletic Trainer	Katie Wissing
	Saint Louis '21

Media Relations

Director of Ath. Comm./VB Contact	Sean Engel
Office/Cell Phone	414-435-8118
E-mail	engelsf@uwm.edu
Assistant AD Communications	Chris Zills
Athletic Communications Assistant	Seth Dittmer
Content Creation & Strategy	Rachel Klemp
Multimedia Services	Andrew Levesque
Athletics Website	www.mkepanthers.com

2023 HORIZON LEAGUE STANDINGS

Team	Horizon League			Overall			Strk
	W	L	Pct.	W	L	Pct.	
Wright State	13	3	.812	17	10	.630	W5
Milwaukee	12	4	.750	20	10	.667	W1
Green Bay	11	5	.688	13	15	.464	L1
Oakland	10	5	.667	16	11	.593	W1
Northern Kentucky	10	6	.625	15	12	.556	L2
Cleveland State	8	7	.533	14	12	.538	L3
Purdue Fort Wayne	5	10	.333	10	17	.370	W1
Robert Morris	4	13	.235	7	21	.250	W1
IUPUI	3	12	.200	9	17	.346	L1
Youngstown State	3	14	.176	8	20	.286	L1

AROUND THE HORIZON LEAGUE

Oct. 24	Oakland 3	Purdue Fort Wayne 2
	Northern Kentucky 3	Youngstown State 2
	Cleveland State 3	IUPUI 0
	Wright State 3	Robert Morris 1
Oct. 27	Wright State 3	Cleveland State 0
	Oakland 3	Northern Kentucky 2
	Green Bay 3	Robert Morris 1
Oct. 28	Northern Kentucky 3	Cleveland State 0
	Purdue Fort Wayne 3	IUPUI 2
	Wright State 3	Oakland 1
	Green Bay 3	Youngstown State 0
Nov. 2	IUPUI 3	Robert Morris 1
Nov. 3	Youngstown State 3	IUPUI 2
	Oakland 3	Cleveland State 2
	Robert Morris 3	Purdue Fort Wayne 1
	Green Bay 3	Northern Kentucky 0
Nov. 4	Wright State 3	Green Bay 1
	Purdue Fort Wayne 3	Youngstown State 0
Nov. 7	Cleveland State at Purdue Fort Wayne	5:00 pm
	IUPUI at Oakland	5:00 pm
Nov. 10	Northern Kentucky at IUPUI	5:00 pm
	Wright State at Purdue Fort Wayne	5:00 pm
	Robert Morris at Youngstown State	5:00 pm
	Oakland at Green Bay	6:00 pm
Nov. 11	Wright State at IUPUI	3:00 pm
	Cleveland State at Green Bay	4:00 pm
	Northern Kentucky at Purdue Fort Wayne	5:00 pm

HORIZON LEAGUE STATISTICAL LEADERS**Hitting Percent**

1. Ari Miller (MKE)	.375
2. Reilly Zegunis (WSU)	.355
3. Morgan Ostrowski (IUPUI)	.318
4. Skyy Smith (NKU)	.299
5. Aaliyah Byers (WSU)	.295

Kills/Set

1. Panna Ratkai (PFW)	4.66
2. Natalie Stepanovich (RMU)	3.36
3. Abby Kanarky (NKU)	3.32
4. Hannah Vanden Berg (GB)	3.26
5. Madi Malone (MKE)	3.23

Assists/Set

1. Katie Meyer (WSU)	10.22
2. Emma Johnson (GB)	9.86
3. Karly Klaer (CSU)	9.02
4. Taya Haffner (PFW)	8.84
5. Grace Purichia (IUPUI)	8.05

Service Aces/Set

1. Hannah Vanden Berg (GB)	0.48
2. Panna Ratkai (PFW)	0.47
3. Torie Houston (NKU)	0.42
4. Andrea Bortulin (WSU)	0.41
5. Ashleigh Wallin (RMU)	0.40

Blocks/Set

1. Ari Miller (MKE)	1.09
2. Allie Siefke (NKU)	1.07
3. Julia Sell (YSU)	1.05
3. Skyy Smith (NKU)	1.04
5. Aaliyah Byers (WSU)	0.99

Digs/Set

1. Emily Wichmann (OAK)	5.38
2. Jenny Wessling (WSU)	5.30
3. Emma Walker (CSU)	5.01
4. Anna Burke (NKU)	4.87
5. LonDynn Betts (PFW)	4.53

GAME NOTES

SCOUTING THE COMPETITION – CLEVELAND STATE

Cleveland State is fighting to stay alive in the Horizon League playoff picture at 14-12 overall with an 8-7 mark in the Horizon League. The Vikings are hoping to fend off Purdue Fort Wayne, whom they meet in Indiana on Tuesday night before making its way to Milwaukee on Friday. Earlier this season, Cleveland State knocked off the Panthers in three sets in Ohio, with Milwaukee looking to return the favor on Friday.

In the match against Milwaukee on October 14, Liberty Torres had a team-best 15 kills while JeriLynn Koehler and Madalynn Butner each had seven kills on the night. Karly Klaer had 40 assists, while both she and Lesley Marshall recorded the two service aces for the Vikings on the afternoon. Emma Walker led CSU with 18 digs on the match followed by Klaer with 13. Laken Voss had eight kills and six digs, as she continues to be one of the best all-around players in the Horizon League this season, as she and Torres and both 12th and 11th respectively in points per set this season.

Cleveland State is one of the top digging teams in the nation at 11th in total team digs and 13th in digs per set heading into play this week, Voss is 21st in the nation in both total attacking attempts (1,061), and total digs (501). A solid defensive team, the Vikings are tops in the league in opponent hitting percentage as they have held opponents to a .172 this season, they will run into the top hitting team in the conference this Friday at the Klotsche Center as Milwaukee leads the league with a .251 team hitting percentage. Cleveland State and Milwaukee are the top two teams in the Horizon League in blocks, with Milwaukee first at 264.5 this season, while the Vikings are in a close second at 238.

SCOUTING THE COMPETITION – OAKLAND

Oakland enters the final week of the season having already clinched a berth in the Horizon League Tournament and will host IUPUI on Tuesday before heading to Wisconsin for Green Bay on Friday and Milwaukee in the regular season finale. The Golden Grizzlies are 16-11 overall and 10-5 in league matches, which includes a 3-0 loss at the hands of the Panthers back on October 13 in Michigan.

Libby Gentile led the Golden Grizzlies with nine kills against Milwaukee in mid-October, but no other Oakland player had more than four kills in a match that saw the Golden Grizzlies hit just .021 as a team. Oakland had just one ace and two blocks on the match as the Golden Grizzlies dropped the three sets to the Panthers 25-18, 25-12, 25-9.

The Golden Grizzlies are leading the nation in both team digs with 1,906 and total attacking attempts 4,055, Oakland is in the middle of the pack in most statistical categories within the 10-member Horizon League, aside from digs, where the team is at the top of the conference and more than 100 more than second-place Cleveland State. Patti Cesarini and Gentile lead the offense in terms of kills, while both Sarah Turner and Rachel Rossman have over 500 assists each. Emily Wichmann has been one of the top defensive players in the league with 584 digs in 108 sets played.

PLAYOFF PICTURE?

To say the playoff picture is set couldn't be farther from the truth with less than a week to go in the regular season. The only certainty at this point is that five bids have been clinched by Milwaukee, Wright State, Green Bay, Oakland, and Northern Kentucky. The sixth spot in the playoffs could end up in the hands of current occupant Cleveland State, or with the Mastodons of Purdue Fort Wayne.

The jockeying for seeding is also well up in the air, with Milwaukee still in the hunt for a regular season championship. Should the Panthers end up with an identical record as Wright State, the decision as to whom hosts the Horizon League Tournament would depend on who is the third seed as both Milwaukee and Wright State split this season's action with 1-1 match records and 4-4 set records against one another. Wright State enters play this weekend with a full game lead over the Panthers, as Milwaukee fell out of first place this past weekend during the team's trip to Wright State.

A lot of numbers will be crunched throughout the weekend to determine seeding, hosting duties, and who can claim the regular season crown.

IN THE NATION

Out of 332 Division I programs, Milwaukee is currently second in the nation with 1,501 kills, second in the country with 1,398 assists, and fourth in the country with 264.5 blocks on the season. Milwaukee also holds a spot in the top-10 with 3,910 total attacking attempts heading into this week's action.

Individually, Ari Miller is 21st in the nation with 451 points, while Madi Malone is 47th in the same category with 417 points. Miller is also top-15 in the nation with 126 blocks, while she is 46th in the country with a .375 hitting percentage.

Madi Malone is 54th in Division I with 375 kills this season, while she is also 25th in total attacking attempts with 1,043. Malone, like Miller, is also in the top-50 in total points with 417 on the season thus far.

MILLER'S TOP-10 ASCENT

With 351 kills this season, Ari Miller now has 1,532 for her career with Milwaukee, that total now places her third on the all-time Division I kills list in program history. Next on the list is Laura Dallenbach in second place all-time as Dallenbach finished her career with 1,534 career kills.

In addition to her kills mark, Miller now has a career-best 126 blocks in her final collegiate season to give her 442 career blocks. She is currently in third on the all-time blocks list and 32 more to reach the top-two on the all-time blocks list. Miller also into first all-time in both career matches with 132, and career sets played with 488.

HORIZON LEAGUE HONORS

Milwaukee has had a league-leading six selections for Horizon League Player of the Week as Madi Malone earned her third selection this Monday. In addition to Malone's three selections, Ari Miller has earned the weekly nod from the conference on three occasions in the month of September.

Malone and Miller are two of just three Horizon League student-athletes to earn multiple Player of the Week nods this season. Panna Ratkai of Purdue Fort Wayne has four selections, while PFW has had five selections as a team.

PICKING UP THE PACE IN HORIZON LEAGUE PLAY

In 16 conference matches this season, Madi Malone has stepped it up with a team-best 217 kills, good enough for 3.62 kills per set and is hitting .279 on the year with a team-best 567 attacking attempts. Malone is second on the team with 17 service aces and is also second on the team with 150 digs during that span.

In 30 matches overall on the season, Malone has 3.23 kills per set with a team-best 375 kills on a team-high 1,043 attempts. Malone only had two service aces in non-conference play, finishing non-league play with 131 digs.

MILLENNIUM CLUB

It was a historic night for a pair of Panther in the October 27 match against Youngstown State as Madi Malone reached 1,000 career kills, while Josie Johnson reached 1,000 career assists.

Malone joins Ari Miller as the two Panthers with more than 1,000 career kills, while Johnson joins Kaley Blake as the two Panthers with over 1,000 career assists.

BLOCK PARTY

Following 179 blocks in 2019, the Panthers have increased their team's total block total every season, with 180 in 2021, and 211 in 2022. Through 25 matches Milwaukee has 264.5 blocks and are on a strong pace to continue their upward trend in 2023. The team's block total is the highest since the 2011 season, when the team recorded 272 total blocks that season. The single-season record is 379.5 blocks during the team's inaugural season in 1990.

The Panthers are tops in the Horizon League with their team block total at 264.5 and are also second in the league in solo blocks with 62 thus far. Ari Miller is second in the league with 20 solo blocks, while Lakyn Graves is fourth with 18 on the season.

With 126 total blocks on the season individually, Ari Miller is currently 13th in all of NCAA Division I and is just 20 blocks off the national lead.

DOUBLE-QUARTER

Twice this season setters Kaley Blake and Josie Johnson have recorded at least 25 assists each in the span of one contest. Against Villanova early in the season, Johnson and 30 and Blake had 26 in the five-setter against the Wildcats. Against Air Force on September 15, Johnson had 29 and Blake registered 25. The duo has now accomplished the feat on three occasions in their career, with their first instance coming on October 18 of the 2022 season, when Johnson had 26 and Blake had 29 against IUPUI.

The last time two setters had more than 30 assists in a single match came back on August 29, 2021, when Blake had 32 assists and former teammate Rylie Vaughn had 31 in the team's five-set match against Valparaiso at the Klotsche Center.

CAN YOU DIG IT?

In her final season with the team, Sarah Schrader has played a vital role in the team's defensive efforts in the back row this year with a team-best 316 digs, which is already the second highest dig total for her career. In 2022, Schrader had a career-best 324 digs and is well ahead of that pace as she is averaging 3.85 digs per set compared to last year's 3.31 dig per set as a junior.

With her 36 digs against Western Illinois on September 8, Schrader moved into a third-place tie on the single-match digs list in five-set matches, equaling the mark of Myanna Ruiz in September of 2015. The single match-record for the Panthers is 41 digs set by Becky Peters in 2005, while Lauren Felsing is the only other player to reach 40 digs in a match as she did so in 2009 with 40 digs in a four-set match.

NO SOPHOMORE SLUMP HERE

Following strong freshman campaigns in 2022 Natalie Schmitz and Josie Johnson both reached new career-high marks at their respective positions during the opening trio of matches in Michigan.

Schmitz has secured a career-best 17 kills in three matches this season, including the team's matches against Villanova, Montana State, and Northwestern. Johnson also reached a career-high mark in the match against the Bobcats of Montana State with 31 assists.

COACHING MILESTONES

Milwaukee head coach Susie Johnson earned her 272nd head coaching victory at Milwaukee to become the program's all-time leader in wins as a Division I program (since 1990). Johnson earned the win with a five-set victory over the Chicago State Cougars on Tuesday evening and is now the department's leader in wins for any women's sport at Milwaukee.

In addition to her head coaching wins total with the Panthers, Johnson also recorded her 500th career win with the Panthers program on Saturday against Purdue Fort Wayne. Johnson has 274 wins as head coach, coupled with 226 wins during her 10 seasons as an assistant coach with the program.

On October 20, Johnson earned her 300th career victory, which includes her 280 at Milwaukee and 20 during her first two collegiate seasons as a head coach at Parkside.

1,000 DIVISION I MATCHES

Earlier this season, the Milwaukee volleyball program played its 1,000th Division I match in its 34th season of competition. The Panthers won the match in five sets over Western Illinois at the SIUE Cougar Classic. The program's first-ever match took place on August 31, 1990, against Wright State in Macomb, Illinois at a tournament hosted by Western Illinois.

LOOKING AHEAD

After this weekend, Milwaukee will be competing in the Horizon League Tournament. The team will play at the highest seed in the tournament, which may ultimately be the Klotsche Center depending upon the results of this week's matches. The quarterfinal round will take place on November 17 with the three seed playing the six seed and the four seed playing the five seed.

The winners will advance to take on the top-two seeds in the semifinals on November 18, before the remaining two teams will dual for the Horizon League Championship at 2:00 p.m. local time depending on the host site.

MILWAUKEE VOLLEYBALL ROSTER

No.	Name	Pos.	Ht.	Yr.	Hometown (High School/College)
1	Tatum Catalano	OH/RS	6-0	Jr.	Germantown, Wis. (Germantown)
2	Bri Geurts	RS/MB	6-0	Jr.	De Pere, Wis. (De Pere)
3	Lakyn Graves	MB	6-2	Jr.	Menomonee Falls, Wis. (Sussex Hamilton/Omaha)
4	Josie Johnson	S	5-7	So.	Burlington, Wis. (Waterford Union)
6	Ari Miller	MB	5-11	Gr.	Jackson, Wis. (Kettle Moraine Lutheran)
8	Kaley Blake	S	5-7	Sr.	Burlington, Wis. (Burlington)
9	Kati Goba	DS	5-4	Fr.	Mukwonago, Wis. (Wisconsin Lutheran)
10	Czhen Beneby	MB	6-3	So.	West Palm Beach, Fla. (Alexander W. Dreyfoos/Virginia)
11	Natalie Schmitz	OH	6-1	So.	Ham Lake, Minn. (Blaine)
12	Bella Lipski	MB	6-2	Fr.	Milwaukee, Wis. (Divine Savior Holy Angels)
13	Kara Erdmann	DS	5-6	So.	Forrester, Ill. (Forrester)
14	Madi Malone	OH	6-0	Jr.	Newark, Ill. (Newark)
15	Sarah Schrader	OH	5-8	Sr.	Sussex, Wis. (Sussex Hamilton)
16	Rachel Scott	RS	6-2	So.	Belvidere, Ill. (Belvidere North)
17	Mati Jakscht	DS	5-6	Gr.	East Troy, Wis. (East Troy)



**Tatum
Catalano**



**Bri
Geurts**



**Lakyn
Graves**



**Josie
Johnson**



**Ari
Miller**



**Kaley
Blake**



**Kati
Goba**



**Czhen
Beneby**



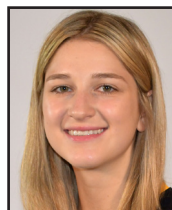
**Natalie
Schmitz**



**Bella
Lipski**



**Kara
Erdmann**



**Madi
Malone**



**Sarah
Schrader**



**Rachel
Scott**



**Mati
Jakscht**

COACHING STAFF

Head Coach: Susie Johnson (17th season)
Associate Head Coach: Lindsey Vanden Berg (17th season)
Assistant Coach: Nikki Zimmerman (third season)
Assistant Coach: Will Hall (first season)

ROSTER BY STATE

Wisconsin: Kaley Blake, Tatum Catalano, Bri Geurts, Kati Goba, Lakyn Graves, Mati Jakscht, Josie Johnson, Bella Lipski, Ari Miller, Sarah Schrader
Florida: Czhen Beneby
Illinois: Kara Erdmann, Madi Malone, Rachel Scott
Minnesota: Natalie Schmitz

PRONUNCIATION GUIDE

Czhen Beneby ZEN BEN-uh-bee
Tatum Catalano TAY-tum cat-uh-LAH-no
Bri Geurts GERTS
Lakyn Graves LAY-kin
Mati Jakscht YOTCH

ROSTER BY CLASS

Graduate Students: Ari Miller, Mati Jakscht
Seniors: Kaley Blake, Sarah Schrader
Juniors: Tatum Catalano, Bri Geurts, Lakyn Graves, Madi Malone
Sophomore: Czhen Beneby, Kara Erdmann, Josie Johnson, Natalie Schmitz, Rachel Scott
Freshman: Kati Goba, Bella Lipski



SUSIE JOHNSON

HEAD COACH

17TH SEASON

284-210 (.575) AT MILWAUKEE

Susie Johnson enters her 27th overall season with the Milwaukee volleyball program, including the last 16 seasons as head coach as she enters the 2023 season.

Johnson was named head coach in May of 2007 after 10 years as an assistant and associate head coach at Milwaukee. Since taking over the reins, Johnson has led Milwaukee to 264 wins, six regular-season titles, four league-tournament crowns, and four NCAA Tournament berths.

In her 26 total seasons at Milwaukee, the Panthers have compiled a 490-270 record. That number includes a 286-98 mark in league play and a 240-70 record at the Klotsche Center. The Panthers have also won 159 of their 190 league matches at home with Johnson on the bench.

With half of the roster new to the Milwaukee program in 2022, the Panthers mustered 10 wins while battling through a challenging non-conference slate that included five teams that were ranked by the AVCA, including No. 11 Purdue, who was the highest ranked opponent for a Panther squad since December of 2013. Three Panthers earned postseason honors from the Horizon League as Ari Miller was a first-team honoree, Madi Malone was a second teamer, and Natalie Schmitz was a member of the All-Freshman Team. Miller went on to become a member of the Horizon All-Academic Team as well as the College Sports Communicators Academic All-District team, becoming the first Panther to receive multiple selections by CSC/CoSIDA.

Her overall run has included the first undefeated Horizon League season in 17 years, a school-record 18-match winning streak and the program's best-ever NCAA Tournament performance - a heartbreaking five-set loss to Dayton in 2009.

In 2011, the Panthers went 25-5 overall and 16-0 in league play,

becoming the first Horizon League team to go through the league schedule without a loss since Notre Dame did it in 1994. Milwaukee also set a school record with 18 straight wins and nearly upset Iowa State in the first round of the postseason.

Johnson's efforts on the recruiting trail have led to nine league newcomers of the year during her tenure, including Malone in 2022, Bridget Wallenberger in 2016, and Rachel Neuberger in 2009. Plus, 24 Panther players have earned a spot on the league's all-newcomer team in the last 24 years. Panther players have then consistently developed into the best players in the Horizon League. In her 25 seasons in Milwaukee, Johnson has coached 11 League Players of the Year, with Kerri Schuh winning the award twice and Neuberger claiming the distinction in 2013.

In all, players have earned all-league honors 66 times under Johnson and the recognition for Panther players has extended far beyond the Horizon League. With Johnson's assistance, MKE players have earned AVCA All-America honors ten times and AVCA All-Region honors 22 times. Plus, three Panthers have earned AVCA Region Freshman of the Year accolades, including Neuberger and Kayla Price.

Johnson's playing background is at setter, where she earned All-Big Sky and All-Northwest Region honors at Idaho State. She was also a two-time Academic All-Big Sky honoree and has helped direct the Panthers to great success in the classroom, with two Academic All-Americans and a team GPA above 3.3.

A native of Racine, Johnson joined the Panther staff after serving as an assistant coach at Indiana State. She also worked at Idaho State and was head coach at UW-Parkside. She lives in Racine with her husband, C.J., son Ty, daughter Josie and stepson Brody.

Panthers 2023 Record When ...

At Home	9-2
On the Road	8-5
At a Neutral Site	3-3

In Three-Set Matches	7-3
In Four-Set Matches	8-6
In Five-Set Matches	5-1

Winning the First Set	15-2
Leading After Two Sets	8-0
Trailing After Two Sets	2-5
Tied After Two Sets	10-5

On Weekdays	10-6
On Weekends	3-4
On Mondays	1-0
On Tuesdays	2-2
On Wednesdays	0-0
On Thursdays	0-1
On Fridays	10-3
On Saturdays	7-4
On Sundays	0-0
In August	0-3
In September	12-3
In October	7-3
In November	1-1
vs. Horizon	12-4

2023 HORIZON LEAGUE PRESEASON POLL

School (1st place votes)	Points
1. Wright State (9)	99
2. Northern Kentucky (1)	85
3. Green Bay	76
4. Milwaukee	73
5. Cleveland State	66
6. Oakland	47
7. Purdue Fort Wayne	35
8. Youngstown State	33
T9. IUPUI	18
T9. Robert Morris	18

IT'S "MILWAUKEE"

A lot has been made of the correct way to talk about the University of Wisconsin-Milwaukee, especially in the area of athletics. It would be appreciated if you would refer to the athletics teams as either "Milwaukee" or "MKE". Your cooperation in this matter is greatly appreciated.

Milwaukee Athletics is making an effort to brand itself as "Milwaukee" instead of other references. Please avoid UW-Milwaukee, UW-M, Wisc.-Mil, UW-MIL, Wisconsin-Milwaukee, etc. We appreciate your assistance with this effort in advance.

2023 OVERALL STATISTICS

##	Player	SP	Attack					Set		Serve			RE	Dig		Blocking						PTS
			K	K/S	E	TA	PCT	A	A/S	SA	SE	SA/S		DIG	DIG/S	BS	BA	TOT/S	BLK/S	BE	BHE	
2	Geurts, Bri	95	136	1.43	54	334	.246	5	0.05	0	0	0.00	0	29	0.31	3	33	36	0.38	5	0	155.5
3	Graves, Lakyn	116	124	1.07	48	306	.248	4	0.03	3	9	0.03	0	25	0.22	18	94	112	0.97	5	2	192.0
4	Johnson, Josie	116	20	0.17	4	63	.254	602	5.19	23	28	0.20	0	197	1.70	0	1	1	0.01	0	8	43.5
6	Miller, Ari	116	352	3.03	77	733	.375	14	0.12	26	41	0.22	1	91	0.78	20	106	126	1.09	14	2	451.0
8	Blake, Kaley	116	5	0.04	1	41	.098	595	5.13	26	15	0.22	0	240	2.07	0	0	0	0.00	0	5	31.0
9	Goba, Kati	39	1	0.03	0	2	.500	25	0.64	3	9	0.08	14	76	1.95	0	1	1	0.03	0	0	4.5
10	Beneby, Czhen	83	132	1.59	71	300	.203	1	0.01	0	0	0.00	0	24	0.29	11	44	55	0.66	8	3	165.0
11	Schmitz, Natalie	116	306	2.64	121	917	.202	5	0.04	17	15	0.15	22	85	0.73	5	43	48	0.41	8	0	349.5
12	Lipski, Bella	24	11	0.46	7	33	.121	0	0.00	0	0	0.00	0	6	0.25	1	13	14	0.58	3	0	18.5
13	Erdmann, Kara	83	0	0.00	2	4	-.500	38	0.46	2	4	0.02	21	196	2.36	0	0	0	0.00	0	2	2.0
14	Malone, Madi	116	375	3.23	120	1043	.244	25	0.22	19	22	0.16	57	281	2.42	3	40	43	0.37	3	1	417.0
15	Schrader, Sarah	110	2	0.02	6	25	-.160	76	0.69	34	22	0.31	48	366	3.33	0	0	0	0.00	1	1	36.0
16	Scott, Rachel	48	36	0.75	10	106	.245	5	0.10	0	0	0.00	0	22	0.46	1	30	31	0.65	7	0	52.0
17	Jakscht, Mati	12	1	0.08	0	3	.333	3	0.25	2	1	0.17	5	23	1.92	0	0	0	0.00	0	2	3.0
MILWAUKEE		116	1501	12.94	521	3910	.251	1398	12.05	155	166	1.34	186	1661	14.32	62	405	264.5	2.28	54	26	1,920.5
Opponents		116	1472	12.69	667	4094	.197	1398	12.05	186	203	1.60	155	1645	14.18	30	395	227.5	1.96	35	21	1,885.5

2023 HORIZON LEAGUE STATISTICS

				Attack					Set				Serve				
##	Player	SP	MP-MS	K	K/S	E	TA	PCT	A	A/S	TA	PCT	SA	SA/S	SE	TA	PCT
2	Geurts, Bri	47	13-3	43	0.91	24	121	.157	1	0.02	14	.071	0	0.00	0	2	1.000
3	Graves, Lakyn	60	16-16	93	1.55	34	207	.285	4	0.07	18	.222	0	0.00	2	2	.000
4	Johnson, Josie	60	16-13	11	0.18	4	38	.184	281	4.68	779	.361	14	0.23	14	219	.936
6	Miller, Ari	60	16-16	173	2.88	41	361	.366	8	0.13	30	.267	14	0.23	18	193	.907
8	Blake, Kaley	60	16-3	4	0.07	1	25	.120	330	5.50	743	.444	17	0.28	7	232	.970
9	Goba, Kati	21	8-1	1	0.05	0	2	.500	21	1.00	62	.339	3	0.14	4	63	.937
10	Beneby, Czhen	35	10-9	59	1.69	28	126	.246	0	0.00	12	.000	0	0.00	0	0	.000
11	Schmitz, Natalie	60	16-7	154	2.57	53	444	.227	1	0.02	22	.045	7	0.12	7	78	.910
12	Lipski, Bella	24	7-3	11	0.46	7	33	.121	0	0.00	5	.000	0	0.00	0	0	.000
13	Erdmann, Kara	41	14-1	0	0.00	1	3	-.333	22	0.54	98	.224	1	0.02	3	82	.963
14	Malone, Madi	60	16-16	217	3.62	59	567	.279	12	0.20	61	.197	17	0.28	10	236	.958
15	Schrader, Sarah	60	16-8	1	0.02	6	17	-.294	53	0.88	139	.381	21	0.35	14	254	.945
16	Scott, Rachel	18	6-0	21	1.17	5	50	.320	1	0.06	5	.200	0	0.00	0	0	.000
17	Jakscht, Mati	2	1-0	0	0.00	0	1	.000	0	0.00	3	.000	0	0.00	0	0	.000
MILWAUKEE		60	16-16	788	13.13	263	1995	.263	734	12.23	1991	.369	94	1.57	79	1361	.942
Opponents		60	16-16	748	12.47	354	2122	.186	709	11.82	2135	.332	99	1.65	109	1220	.911

2023 SEASON BESTS

KILLS

Team: **71** vs. Western Illinois (Sept. 8)
 Individual: **26** (Madi Malone) at Purdue Fort Wayne (Oct. 20)
 Opponent: **70** vs. Villanova (Aug. 26)

ATTACK PERCENTAGE (min. 10 kills)

Team: **.459** vs. Idaho (Sept. 8)
 Individual: **.650** (Ari Miller) vs. Purdue Fort Wayne (Sept. 23)
 Opponent: **.347** at Cleveland State (Oct. 14)

ASSISTS

Team: **66** vs. Western Illinois (Sept. 8)
 Individual: **32** (Kaley Blake & Josie Johnson) (Once Each)
 Opponent: **67** vs. Villanova (Aug. 26)

ACES

Team: **13** vs. Youngstown State (Oct. 27)
 Individual: **6** (Madi Malone) vs. Youngstown State (Oct. 27)
 Opponent: **15** at Northern Kentucky (Nov. 4)

DIGS

Team: **93** vs. Western Illinois (Sept. 8)
 Individual: **36** (Sarah Schrader) vs. Western Illinois (Sept. 8)
 Opponent: **83** vs. Western Illinois (Sept. 8)

TOTAL BLOCKS

Team: **14** (Three Times)
 Individual: **8** (Ari Miller; Three Times)
 Opponent: **12.5** vs. Northwestern (Sept. 4)

2023 SCHEDULE AND RESULTS

Date	Opponent	Score	Set-by-set	Overall	Horizon	Time	Att.
<i>WESTERN MICHIGAN TOURNAMENT</i>							
Aug. 25	at Western Michigan	L, 1-3	15-25, 25-21, 20-25, 12-25	0-1		1:46	251
Aug. 26	vs. Northern Iowa	L, 0-3	22-25, 23-25, 20-25	0-2		1:24	117
Aug. 26	vs. Villanova	L, 2-3	22-25, 25-22, 23-25, 25-18, 15-17	0-3		2:23	153
<i>ST. THOMAS TOURNAMENT</i>							
Sept. 1	vs. California Baptist	L, 1-3	25-23, 13-25, 22-25, 19-25	0-4		2:01	153
Sept. 1	vs. Montana State	W, 3-1	26-24, 22-25, 25-16, 25-22	1-4		1:58	214
Sept. 2	at St. Thomas (Minn.)	W, 3-0	25-19, 25-14, 25-18	2-4		1:18	406
Sept. 9	NORTHWESTERN	W, 3-1	25-23, 14-25, 25-22, 25-23	3-4		2:04	637
<i>SIUE TOURNAMENT</i>							
Sept. 8	vs. Idaho	W, 3-0	25-13, 25-16, 25-14	4-4		1:14	102
Sept. 8	vs. Western Illinois	W, 3-2	22-25, 25-18, 25-18, 25-27, 15-10	5-4		2:27	104
Sept. 9	at SIU-Edwardsville	L, 1-3	23-25, 25-16, 19-25, 18-25	5-5		1:50	n/a
Sept. 12	DEPAUL	W, 3-0	25-15, 25-20, 25-22	6-5		1:18	313
Sept. 14	MARQUETTE	L, 1-3	14-25, 18-25, 25-17, 17-25	6-6		1:51	653
Sept. 15	AIR FORCE	W, 3-2	22-25, 20-25, 25-18, 25-20, 15-13	7-6		2:18	368
Sept. 19	at Chicago State	W, 3-2	25-23, 16-25, 25-19, 16-25, 15-11	8-6		2:09	n/a
Sept. 22	IUPUI *	W, 3-0	25-18, 25-17, 25-11	9-6	1-0	1:12	285
Sept. 23	PURDUE FORT WAYNE *	W, 3-0	25-18, 25-9, 25-19	10-6	2-0	1:10	283
Sept. 29	at Robert Morris *	W, 3-1	25-15, 25-27, 25-13, 25-17	11-6	3-0	1:53	142
Sept. 30	at Youngstown State *	W, 3-1	25-20, 25-17, 21-25, 25-20	12-6	4-0	1:57	184
Oct. 3	GREEN BAY *	L, 1-3	25-21, 16-25, 19-25, 17-26	12-7	4-1	1:47	485
Oct. 6	NORTHERN KENTUCKY *	W, 3-1	23-25, 25-16, 25-20, 26-24	13-7	5-1	2:01	431
Oct. 7	WRIGHT STATE *	W, 3-1	25-21, 15-25, 25-16, 25-22	14-7	6-1	1:52	381
Oct. 13	at Oakland *	W, 3-0	25-18, 25-12, 25-9	15-7	7-1	1:19	293
Oct. 14	at Cleveland State *	L, 0-3	20-25, 22-25, 24-26	15-8	7-2	1:21	228
Oct. 20	at Purdue Fort Wayne *	W, 3-2	21-25, 17-25, 33-31, 25-2, 15-11	16-8	8-2	2:22	362
Oct. 21	at IUPUI *	W, 3-1	18-25, 25-17, 25-17, 25-21	17-8	9-2	1:40	215
Oct. 27	YOUNGSTOWN STATE *	W, 3-2	25-14, 20-25, 18-25, 25-15, 15-8	18-8	10-2	2:09	913
Oct. 28	ROBERT MORRIS *	W, 3-0	25-19, 25-20, 25-18	19-8	11-2	1:23	304
Oct. 31	at Green Bay *	L, 0-3	21-25, 18-25, 22-25	19-9	11-3	1:25	641
Nov. 3	at Wright State *	L, 1-3	22-25, 17-25, 25-22, 19-25	19-10	11-4	1:54	512
Nov. 4	at Northern Kentucky *	W, 3-1	25-19, 15-25, 25-18, 26-24	20-10	12-5	2:00	343
Nov. 10	CLEVELAND STATE *					6:00 pm	
Nov. 11	OAKLAND *					4:00 pm	
Nov. 17	Horizon League Quarterfinals ^					TBA	
Nov. 18	Horizon League Semifinals ^					TBA	
Nov. 19	Horizon League Championship ^					TBA	

Home Games in **BOLD** | * Horizon League Match | ^ Horizon League Tournament

SEASON & CAREER HIGHS

1 Tatum Catalano | Jr. | OH/RS**2023 Season Highs**

Kills n/a
 Attempts n/a
 Hitting % n/a
 Blocks n/a
 Digs n/a
 Aces n/a
 Assists n/a

Career Highs

Kills 4 (Twice)
 Attempts 12 (9/9/22 vs. LSU)
 Hitting % .. 1.000 [1-0-1] (10/7/22 vs. CSU)
 Blocks 4 (Twice)
 Digs 4 (10/8/22 vs. OAK)
 Aces same
 Assists 1 (Twice)

4 Josie Johnson | So. | S**2023 Season Highs**

Kills 3 (10/28 vs. Robert Morris)
 Attempts 5 (9/30 at Youngstown State)
 Hitting % .. 1.000 [2-0-2] (10/13 at Oakland)
 Blocks 1 (11/4 at Northern Kentucky)
 Digs 16 (9/15 vs. Air Force)
 Aces 3 (10/6 vs. Northern Ky.)
 Assists 32 (9/8 vs. Western Illinois)

Career Highs

Kills same
 Attempts 6 (9/23/22 vs. YSU)
 Hitting % same
 Blocks 1 (Three Times)
 Digs same
 Aces same
 Assists same

9 Kati Goba | Fr. | DS**2023 Season Highs**

Kills 1 (10/27 vs. Youngstown St.)
 Attempts 1 (Twice)
 Hitting % 1.000 [1-0-1] (10/27 vs. YSU)
 Blocks 1 (9/1 vs. Mont. St.)
 Digs 13 (10/27 vs. Youngstown St.)
 Aces 1 (Three Times)
 Assists 8 (10/28 vs. Robert Morris)

Career Highs

Kills same
 Attempts same
 Hitting % same
 Blocks same
 Digs same
 Aces same
 Assists same

2 Bri Geurts | Jr. | RS/MB**2023 Season Highs**

Kills 15 (9/8 vs. Western Illinois)
 Attempts 27 (9/14 vs. Marquette)
 Hitting % . .750 [3-0-4] (8/25 vs. Villanova)
 Blocks 5 (10/20 at Purdue Fort Wayne)
 Digs 6 (10/27 vs. Youngstown St.)
 Aces n/a
 Assists 2 (9/4 vs. Northwestern)

Career Highs

Kills same
 Attempts 30 (9/17/22 vs. New Mexico St.)
 Hitting %750 [3-0-4] (Twice)
 Blocks 9 (10/8/22 vs. Oakland)
 Digs 6 (Twice)
 Aces 2 (Five Times)
 Assists 3 (Twice)

6 Ari Miller | Gr. | MB**2023 Season Highs**

Kills 19 (Three Times)
 Attempts 41 (9/8 vs. Western Illinois)
 Hitting %650 [13-0-20] (9/23 vs. PFW)
 Blocks 8 (Three Times)
 Digs 8 (10/6 vs. Northern Ky.)
 Aces 3 (9/30 at Youngstown State)
 Assists 3 (10/31 at Green Bay)

Career Highs

Kills 30 (9/17/21 vs. West. Michigan)
 Attempts 50 (9/17/21 vs. West. Michigan)
 Hitting % . .688 [11-0-16] (9/24/22 vs. RM)
 Blocks 10 (10/13/19 at Oakland)
 Digs same
 Aces 3 (Four Times)
 Assists same

10 Czhen Beneby | So. | MB**2023 Season Highs**

Kills 10 (10/6 vs. Northern Ky.)
 Attempts 20 (Twice)
 Hitting %636 [7-0-11] (9/14 vs. Marq.)
 Blocks 6 (9/19 at Chicago State)
 Digs 4 (Twice)
 Aces n/a
 Assists 1 (9/8 vs. Idaho)

Career Highs

Kills 15 (11/1/22 vs. PFW)
 Attempts 26 (11/5/22 at CSU)
 Hitting % .. .800 [8-0-10] (9/23/22 vs. YSU)
 Blocks 6 (Four Times)
 Digs 5 (10/22 at YSU)
 Aces same
 Assists 1 (Four Times)

3 Lakyn Graves | Jr. | MB**2023 Season Highs**

Kills 11 (9/30 at Youngstown State)
 Attempts 24 (11/3 at Wright State)
 Hitting %625 [5-0-8] (9/12 vs. DePaul)
 Blocks 7 (Three Times)
 Digs 6 (8/25 at West. Michigan)
 Aces 2 (8/26 vs. Villanova)
 Assists 1 (Four Times)

Career Highs

Kills same
 Attempts 30 (9/16/21 vs. Weber St.)
 Hitting % same
 Blocks 13 (9/3/21 vs. Arizona State)
 Digs same
 Aces same
 Assists same

8 Kaley Blake | Sr. | S**2023 Season Highs**

Kills 1 (Five Times)
 Attempts 4 (10/7 vs. Wright State)
 Hitting % 1.000 [1-0-1] (Three Times)
 Blocks n/a
 Digs 16 (Twice)
 Aces 3 (9/14 vs. Marquette)
 Assists .. 32 (10/20 at Purdue Fort Wayne)

Career Highs

Kills 2 (Twice)
 Attempts 6 (Twice)
 Hitting % 1.000 [2-0-2, 1-0-1] (4x)
 Blocks 1 (9/24/21 at PFW)
 Digs 17 (10/1/22 at NKU)
 Aces 4 (9/27/22 at IUPUI)
 Assists 33 (8/28/22 at Notre Dame)

11 Natalie Schmitz | So. | OH**2023 Season Highs**

Kills 17 (Three Times)
 Attempts 54 (9/8 vs. Western Illinois)
 Hitting % .. .647 [11-0-17] (10/28 vs. RMU)
 Blocks 4 (Three Times)
 Digs 8 (10/6 vs. Northern Ky.)
 Aces 3 (Twice)
 Assists 2 (9/12 vs. DePaul)

Career Highs

Kills same
 Attempts same
 Hitting % same
 Blocks 4 (Four Times)
 Digs same
 Aces 3 (Three Times)
 Assists same

SEASON & CAREER HIGHS

12 Bella Lipski | Fr. | MB**2023 Season Highs**

Kills 4 (10/27 vs. Youngstown St.)
 Attempts 8 (10/27 vs. Youngstown St.)
 Hitting %500 [4-0-8] (10/27 vs. YSU)
 Blocks 5 (10/21 at IUPUI)
 Digs 2 (10/21 at IUPUI)
 Aces n/a
 Assists n/a

Career Highs

Kills same
 Attempts same
 Hitting % same
 Blocks same
 Digs same
 Aces n/a
 Assists n/a

15 Sarah Schrader | Sr. | DS**2023 Season Highs**

Kills 1 (Twice)
 Attempts 7 (11/3 at Wright State)
 Hitting % 1.000 [1-0-1] (9/8 vs. W. Illinois)
 Blocks n/a
 Digs 36 (9/8 vs. Western Illinois)
 Aces 4 (10/28 vs. Robert Morris)
 Assists 7 (9/15 vs. Air Force)

Career Highs

Kills 5 (11/5/22 at CSU)
 Attempts 24 (3/22/21 at PFW)
 Hitting % 1.000 [1-0-1] (Twice)
 Blocks 2 (Twice)
 Digs same
 Aces 4 (Twice)
 Assists 9 (8/28/22 at Notre Dame)

13 Kara Erdmann | So. | DS**2023 Season Highs**

Kills n/a
 Attempts 1 (Four Times)
 Hitting %000 [0-0-1] (Twice)
 Blocks n/a
 Digs 22 (10/20 at Purdue Fort Wayne)
 Aces 1 (Twice)
 Assists 6 (10/13 at Oakland)

Career Highs

Kills 1 (Twice)
 Attempts 2 (Three Times)
 Hitting % 1.000 [1-0-1] (Twice)
 Blocks same
 Digs 28 (11/18/22 vs. CSU)
 Aces 2 (11/1/22 vs. PFW)
 Assists same

16 Rachel Scott | So. | RS**2023 Season Highs**

Kills 9 (9/23 vs. PFW)
 Attempts 15 (9/23 vs. PFW)
 Hitting %750 [3-0-4] (9/22 vs. IUPUI)
 Blocks 7 (9/29 at Robert Morris)
 Digs 6 (9/29 at Robert Morris)
 Aces n/a
 Assists 2 (9/8 vs. Western Illinois)

Career Highs

Kills same
 Attempts same
 Hitting % same
 Blocks same
 Digs same
 Aces same
 Assists same

14 Madi Malone | Jr. | OH**2023 Season Highs**

Kills 26 (10/20 at Purdue Fort Wayne)
 Attempts 56 (10/20 at Purdue Fort Wayne)
 Hitting %440 [12-1-25] (Twice)
 Blocks 4 (9/1 vs. Cal. Baptist)
 Digs 19 (9/1 vs. Mont. St.)
 Aces 6 (10/27 vs. Youngstown St.)
 Assists 3 (Three Times)

Career Highs

Kills 29 (10/1/21 vs. WSU)
 Attempts 66 (10/1/21 vs. WSU)
 Hitting %467 [9-2-15] (9/11/21 at C-Ark)
 Blocks same
 Digs same
 Aces same
 Assists 3 (Four Times)

17 Mati Jakscht | Gr. | DS**2023 Season Highs**

Kills 1 (9/8 vs. Western Illinois)
 Attempts 1 (Three Times)
 Hitting % 1.000 [1-0-1] (9/8 vs. WIU)
 Blocks n/a
 Digs 6 (Three Times)
 Aces 1 (Twice)
 Assists 2 (9/8 vs. Western Illinois)

Career Highs

Kills 2 (10/18/22 vs. IUPUI)
 Attempts 5 (3/22/21 at PFW)
 Hitting % 1.000 [1-0-1] (Three Times)
 Blocks same
 Digs 17 (3/8/21 at NKU)
 Aces 3 (10/18/19 vs. IUPUI)
 Assists 12 (2/9/21 vs. GB)

ACTIVE CAREER LEADERS

Matches Played

Ari Miller 132
 Kaley Blake 93
 Mati Jakscht 90
 Sarah Schrader 89

Consecutive Matches Played

Madi Malone 91
 Three Players Tied 57
 (Blake, Johnson, Schmitz)

Sets Played

Ari Miller 488
 Madi Malone 337
 Kaley Blake 333
 Sarah Schrader 310

Kills

Ari Miller 1,532
 Madi Malone 1,052
 Natalie Schmitz 595

Double-Figure Kills

Ari Miller 90
 Madi Malone 63
 Natalie Schmitz 32

Digs

Sarah Schrader 918
 Madi Malone 862
 Kaley Blake 655

Double-Figure Digs

Madi Malone 45
 Sarah Schrader 44
 Kaley Blake 23

Total Blocks

Ari Miller 442
 Bri Guerts 167
 Czhen Beneby 135

Assists

Kaley Blake 1,708
 Josie Johnson 1,093
 Sarah Schrader 155

Double-Doubles

Madi Malone 33
 Kaley Blake 24
 Josie Johnson 6

Service Aces

Sarah Schrader 81
 Kaley Blake 62
 Ari Miller 60
 Madi Malone 54



MILWAUKEE MATCH-BY-MATCH



2023-24 Milwaukee Women's Volleyball

Team Match-by-Match

All games

			Attack				Set			Serve				Recept					Blocking						
Date	Opponent	SP	K	E	TA	PCT	A	TA	PCT	SA	SE	TA	PCT	RE	TA	PCT	DIG	BS	BA	BE	TOTAL	BHE	POINTS	SCORE	
08/25/2023	at Western Mich.	4	37	21	125	.128	35	119	.294	2	12	73	.836	7	86	.919	43	7	12	0	13.0	3	52.0	1-3	
08/26/2023	vs UNI	3	29	13	101	.158	26	94	.277	4	8	67	.881	5	65	.923	33	4	10	2	9.0	0	42.0	0-3	
08/26/2023	vs Villanova	5	65	20	155	.290	60	148	.405	6	5	111	.955	8	92	.913	61	1	10	2	6.0	3	77.0	2-3	
09/01/2023	vs California Baptist	4	45	29	158	.101	44	166	.265	2	4	80	.950	4	91	.956	64	4	12	1	10.0	4	57.0	1-3	
09/01/2023	vs Montana St.	4	62	18	140	.314	60	144	.417	1	3	97	.969	13	81	.840	69	1	20	0	11.0	0	74.0	3-1	
09/02/2023	at St. Thomas (MN)	3	49	13	112	.321	45	113	.398	1	6	74	.919	1	46	.978	58	1	16	2	9.0	1	59.0	3-0	
09/04/2023	Northwestern	4	52	21	137	.226	47	136	.346	5	3	88	.966	8	87	.908	50	3	10	5	8.0	0	65.0	3-1	
09/08/2023	vs Idaho	3	45	6	85	.459	38	79	.481	3	3	74	.959	6	43	.860	38	3	10	2	8.0	0	56.0	3-0	
09/08/2023	vs Western Ill.	5	71	23	193	.249	66	194	.340	5	5	111	.955	6	94	.936	93	2	18	4	11.0	0	87.0	3-2	
09/09/2023	at SIUE	4	50	16	138	.246	48	139	.345	5	6	86	.930	6	84	.929	58	0	10	0	5.0	1	60.0	1-3	
09/12/2023	DePaul	3	45	17	117	.239	44	113	.389	5	2	73	.973	2	57	.965	44	4	12	2	10.0	1	60.0	3-0	
09/14/2023	Marquette	4	48	16	137	.234	45	145	.310	5	7	75	.907	8	89	.910	62	0	8	2	4.0	1	57.0	1-3	
09/15/2023	Air Force	5	69	25	181	.243	65	187	.348	9	12	106	.887	3	93	.968	81	3	8	1	7.0	0	85.0	3-2	
09/19/2023	at Chicago St.	5	46	20	136	.191	41	134	.306	8	11	96	.885	10	92	.891	42	2	24	4	14.0	1	68.0	3-2	
09/22/2023	IUPUI	3	30	12	76	.237	26	67	.388	5	2	73	.973	5	39	.872	34	2	24	0	14.0	0	49.0	3-0	
09/23/2023	Purdue Fort Wayne	3	47	8	99	.394	42	97	.433	8	7	73	.904	2	46	.957	53	0	14	0	7.0	1	62.0	3-0	
09/29/2023	at Robert Morris	4	54	19	134	.261	51	131	.389	5	5	99	.949	5	65	.923	74	2	24	4	14.0	0	73.0	3-1	
09/30/2023	at Youngstown St.	4	56	23	132	.250	53	126	.421	9	2	95	.979	4	75	.947	50	2	10	2	7.0	1	72.0	3-1	
10/03/2023	Green Bay	4	51	25	140	.186	48	146	.329	7	6	78	.923	8	92	.913	55	0	16	3	8.0	4	66.0	1-3	
10/06/2023	Northern Ky.	4	57	20	156	.237	53	159	.333	8	10	98	.898	6	82	.927	78	2	18	2	11.0	0	76.0	3-1	
10/07/2023	Wright St.	4	54	13	151	.272	52	153	.340	6	7	89	.921	6	80	.925	71	1	20	1	11.0	2	71.0	3-1	
10/13/2023	at Oakland	3	40	10	84	.357	38	85	.447	4	4	73	.945	1	37	.973	40	2	12	0	8.0	1	52.0	3-0	
10/14/2023	at Cleveland St.	3	38	21	118	.144	31	110	.282	2	5	67	.925	2	62	.968	36	0	6	3	3.0	0	43.0	0-3	
10/20/2023	at Purdue Fort Wayne	5	61	24	167	.222	59	173	.341	2	3	111	.973	9	89	.899	82	4	16	1	12.0	1	75.0	3-2	
10/21/2023	at IUPUI	4	50	13	124	.298	46	124	.371	8	8	92	.913	5	73	.932	39	1	16	2	9.0	1	67.0	3-1	
10/27/2023	Youngstown St.	5	57	18	135	.289	52	134	.388	13	2	102	.980	11	80	.863	62	0	12	3	6.0	0	76.0	3-2	
10/28/2023	Robert Morris	3	46	12	90	.378	45	95	.474	7	3	74	.959	7	55	.873	38	3	4	1	5.0	0	58.0	3-0	
10/31/2023	at Green Bay	3	41	14	114	.237	40	115	.348	2	3	63	.952	8	68	.882	44	1	8	3	5.0	0	48.0	0-3	
11/03/2023	at Wright St.	4	50	21	151	.192	49	159	.308	5	6	84	.929	5	90	.944	58	4	15	2	11.5	0	66.5	1-3	
11/04/2023	at Northern Ky.	4	56	10	124	.371	49	117	.419	3	6	90	.933	15	78	.808	51	3	10	0	8.0	0	67.0	3-1	
Totals		116	1501	521	3910	.251	1398	3902	.358	155	166	2572	.935	186	2211	.916	1661	62	405	54	264.5	26	1920.5		
Opponents		116	1472	667	4094	.197	1398	4122	.339	186	203	2414	.916	155	2406	.936	1645	30	395	35	227.5	21	1885.5		

Team Averages

Sets Played	Kills per set	Assists per set	Service aces per set	Digs per set	Blocks per set	Points per set	Ball handling error per set	Reception errors per set
116	12.94	12.05	1.34	14.32	2.28	16.56	0.22	1.60

OPPONENT MATCH-BY-MATCH



2023-24 Milwaukee Women's Volleyball Opponents Match-by-Match All games

			Attack				Set			Serve				Recept			Blocking							
Date	Opponent	SP	K	E	TA	PCT	A	TA	PCT	SA	SE	TA	PCT	RE	TA	PCT	DIG	BS	BA	BE	TOTAL	BHE	POINTS	SCORE
08/25/2023	at Western Mich.	4	53	24	129	.225	50	125	.400	7	9	95	.905	2	61	.967	60	2	8	1	6.0	0	66.0	1-3
08/26/2023	vsUNI	3	49	21	111	.252	47	108	.435	5	8	73	.890	4	59	.932	51	0	14	0	7.0	1	61.0	0-3
08/26/2023	vsVillanova	5	70	22	165	.291	67	163	.411	8	14	106	.868	6	106	.943	59	1	16	1	9.0	1	87.0	2-3
09/01/2023	vsCalifornia Baptist	4	56	22	148	.230	55	154	.357	4	6	97	.938	2	76	.974	69	2	18	1	11.0	2	71.0	1-3
09/01/2023	vsMontana St.	4	52	27	158	.158	47	164	.287	13	7	88	.920	1	94	.989	55	1	14	2	8.0	0	73.0	3-1
09/02/2023	at St. Thomas (MN)	3	29	19	123	.081	29	130	.223	1	6	52	.885	1	68	.985	47	0	12	0	6.0	0	36.0	3-0
09/04/2023	Northwestern	4	56	24	143	.224	52	137	.380	8	7	94	.926	5	85	.941	51	1	23	1	12.5	0	76.5	3-1
09/08/2023	vsIdaho	3	26	21	89	.056	24	95	.253	6	1	44	.977	3	71	.958	30	0	4	3	2.0	0	34.0	3-0
09/08/2023	vsWestern Ill.	5	61	24	191	.194	56	191	.293	6	5	99	.949	5	106	.953	83	0	12	4	6.0	0	73.0	3-2
09/09/2023	at SIUE	4	60	22	150	.253	56	149	.376	6	6	90	.933	5	80	.938	65	1	18	0	10.0	1	76.0	1-3
09/12/2023	DePaul	3	34	19	104	.144	32	113	.283	2	2	59	.966	5	71	.930	48	1	14	2	8.0	2	44.0	3-0
09/14/2023	Marquette	4	56	19	147	.252	55	143	.385	8	2	91	.978	5	68	.926	67	1	12	0	7.0	0	71.0	1-3
09/15/2023	Air Force	5	61	19	170	.247	60	175	.343	3	9	102	.912	9	94	.904	77	2	18	2	11.0	0	75.0	3-2
09/19/2023	at Chicago St.	5	61	30	144	.215	59	140	.421	10	12	104	.885	8	85	.906	57	2	14	1	9.0	1	80.0	3-2
09/22/2023	IUPUI	3	27	29	100	-.020	25	98	.255	5	9	48	.813	5	71	.930	29	0	10	0	5.0	1	37.0	3-0
09/23/2023	Purdue Fort Wayne	3	28	17	106	.104	25	108	.231	2	2	48	.958	8	66	.879	41	0	8	2	4.0	0	34.0	3-0
09/29/2023	at Robert Morris	4	42	30	157	.076	38	154	.247	5	8	73	.890	5	94	.947	56	0	16	2	8.0	1	55.0	3-1
09/30/2023	at Youngstown St.	4	52	23	136	.213	49	130	.377	4	8	83	.904	9	93	.903	45	0	16	2	8.0	0	64.0	3-1
10/03/2023	Green Bay	4	52	16	129	.279	48	123	.390	8	3	95	.968	7	72	.903	57	3	12	1	9.0	0	69.0	1-3
10/06/2023	Northern Ky.	4	47	26	160	.131	45	170	.265	6	4	86	.953	8	88	.909	72	0	24	1	12.0	3	65.0	3-1
10/07/2023	Wright St.	4	55	25	161	.186	52	155	.335	6	5	85	.941	6	82	.927	72	2	6	0	5.0	0	66.0	3-1
10/13/2023	at Oakland	3	23	21	94	.021	23	103	.223	1	4	41	.902	4	69	.942	28	0	4	0	2.0	5	26.0	3-0
10/14/2023	at Cleveland St.	3	46	12	98	.347	44	97	.454	2	13	75	.827	2	62	.968	52	3	12	1	9.0	0	57.0	0-3
10/20/2023	at Purdue Fort Wayne	5	67	32	198	.177	65	196	.332	9	15	104	.856	2	108	.981	69	2	16	1	10.0	0	86.0	3-2
10/21/2023	at IUPUI	4	52	27	130	.192	49	133	.368	5	8	81	.901	8	84	.905	50	1	14	0	8.0	0	65.0	3-1
10/27/2023	Youngstown St.	5	55	23	148	.216	53	157	.338	11	7	87	.920	13	100	.870	58	1	18	2	10.0	2	76.0	3-2
10/28/2023	Robert Morris	3	35	16	96	.198	35	101	.347	7	3	58	.948	7	71	.901	27	0	6	3	3.0	1	45.0	3-0
10/31/2023	at Green Bay	3	50	13	116	.319	48	121	.397	8	5	73	.932	2	60	.967	54	2	12	1	8.0	0	66.0	0-3
11/03/2023	at Wright St.	4	63	21	154	.273	58	149	.389	5	6	96	.938	5	78	.936	66	2	18	1	11.0	0	79.0	1-3
11/04/2023	at Northern Ky.	4	54	23	139	.223	52	140	.371	15	9	87	.897	3	84	.964	50	0	6	0	3.0	0	72.0	3-1
Opponent totals		116	1472	667	4094	.197	1398	4122	.339	186	203	2414	.916	155	2406	.936	1645	30	395	35	227.5	21	1885.5	
Milwaukee totals		116	1501	521	3910	.251	1398	3902	.358	155	166	2572	.935	186	2211	.916	1661	62	405	54	264.5	26	1920.5	

Team Averages

Sets Played	Kills per set	Assists per set	Service aces per set	Digs per set	Blocks per set	Points per set	Ball handling error per set	Reception errors per set
116	12.69	12.05	1.60	14.18	1.96	16.25	0.18	1.34